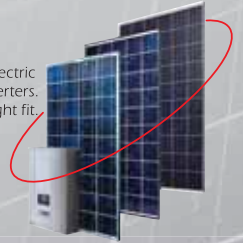


Mitsubishi Electric
modules and inverters.
Just the right fit.



TD Series

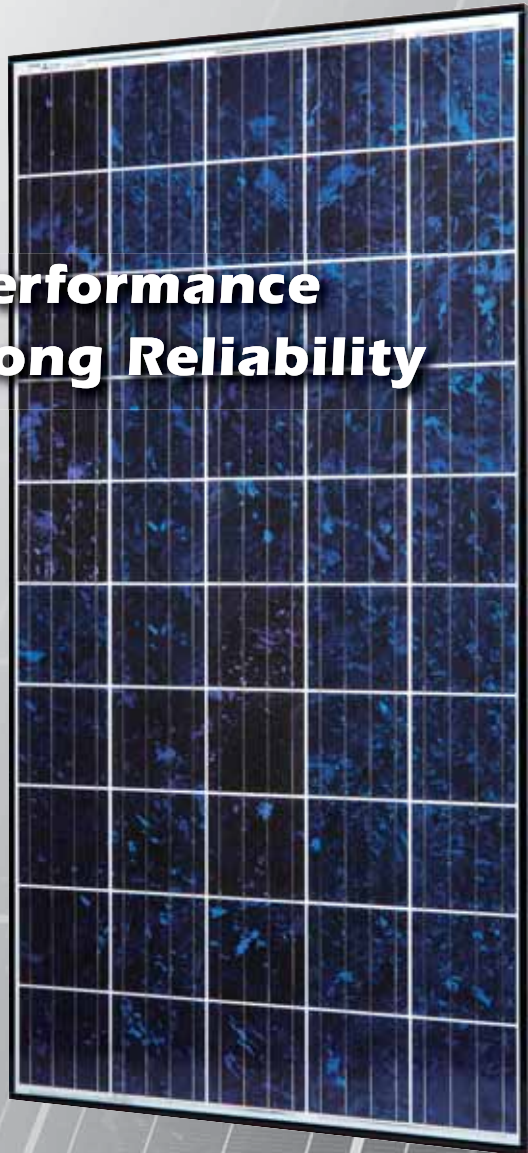
PV-TD195HA6 195Wp

PV-TD190HA6 190Wp

PV-TD185HA6 185Wp

PV-TD180HA6 180Wp

**Best Performance
with Long Reliability**



Performance

Higher Cell Efficiency

- 4 busbar cell
- Solder coatingless
- Fine grid electrodes
- Optimized tab thickness

Higher Module Output

- Highly reflective backfilm with wide cell pitch
- Cerium-free high-transparency glass
- Tight tolerance +/-3%
- High power in actual use
(Paired module average exceeds nominal value)



Reliability

- Static load test of 5400Pa passed with protection bar
- Double corrosion resistant frame coating
- Max. system voltage 1000V with four-layer back film
- Water drainage structure
- Low frame edge slope
- Flexible straight tabs



Safety

- Quad-layer protective design junction box
- Highly heat-resistant bypass diode
- Lock mechanism equipped connectors
- Conforms with IEC 61215 2nd Edition, IEC 61730
- Lighter weight modules at 17.0kg



Ecological

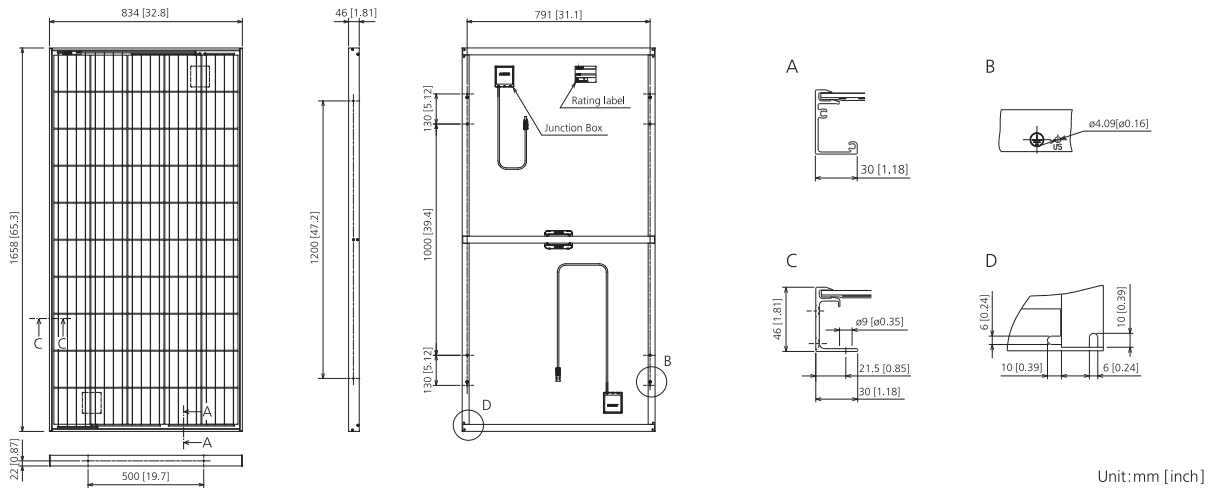
- Lead-free solder modules
- Manufactured in a ISO14001 certified plant
- Shipped on recyclable steel pallets



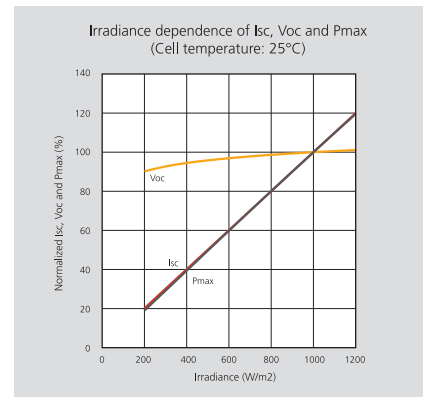
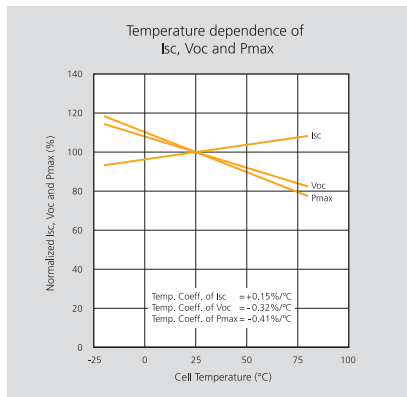
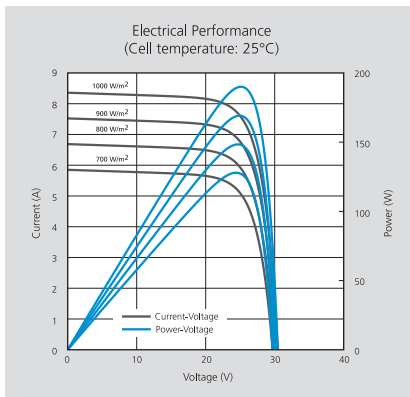
SPECIFICATIONS SHEET

Manufacturer	MITSUBISHI ELECTRIC			
Model name	PV-TD195HA6	PV-TD190HA6	PV-TD185HA6	PV-TD180HA6
Cell type	Polycrystalline silicon, 156mm x 156mm			
Number of cells	50 cells in a series			
Maximum power rating (Pmax)	195W	190W	185W	180W
Warranted minimum Pmax	189.2W	184.3W	179.5W	174.6W
Tolerance of maximum power rating	+/-3%			
Open circuit voltage (Voc)	30.6V	30.5V	30.3V	30.1V
Short circuit current (Isc)	8.48A	8.36A	8.24A	8.12A
Maximum power voltage (Vmp)	25.4V	25.1V	24.9V	24.6V
Maximum power current (Imp)	7.69A	7.56A	7.44A <td 7.32A	
Normal operating cell temperature (NOCT)	47.0°C			
Maximum system voltage	DC 1000V			
Fuse rating	15A			
Dimensions	1658x834x46mm (65.3x32.8x1.81 inches)			
Weight	17kg (37lbs.)			
Output terminal	(+)-800mm/(-)1250mm with MC connector (PV-KBT4/6II-UR, PV-KST4/6II-UR) Cable conforms with TÜV Specification 2 PFG 1169/08.2007			
Module efficiency	14.1%	13.7%	13.4%	13.0%
Packing condition	2 pcs - 1 carton			
Certificates	IEC 61215 Second Edition, IEC 61730			

DRAWINGS AND DIMENSIONS



ELECTRICAL CHARACTERISTICS



Mitsubishi Electric Europe B.V.
 Photovoltaic Division
 Gothaer Str. 8
 D-40880 Ratingen
 Phone: +49 (0) 2102 486 1593
 Fax: +49 (0) 2102 486 1537
 Web: www.mitsubishi-pv.de
 E-Mail: info@mitsubishi-pv.de

Your dealer is: